

Office 365 Application Suite for Mac

All Queensland state school teaching staff and students can download multiple free copies of the latest Microsoft Office to their personal home computers and mobile devices.

Non-teaching school staff will need a licence assigned to their account prior to installation. Any staff member who has previously installed Office will have the licence already, but those who have not installed it previously will need to log a request to Service Centre to obtain a subscription prior to installation. Please use the online form at the [Service Catalogue Online](#), or call the Service Centre on 1800 680 445.

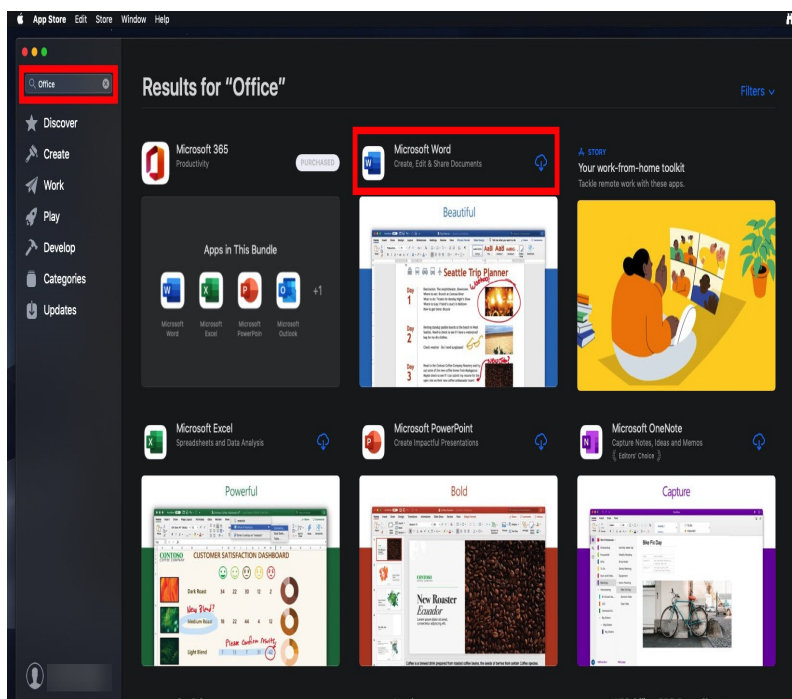
The below installation methods are only to be used on devices which do not have the MOE build installed. Do not follow these directions to install Office on a MOE device.

Method 1 – Apple Mac App Store

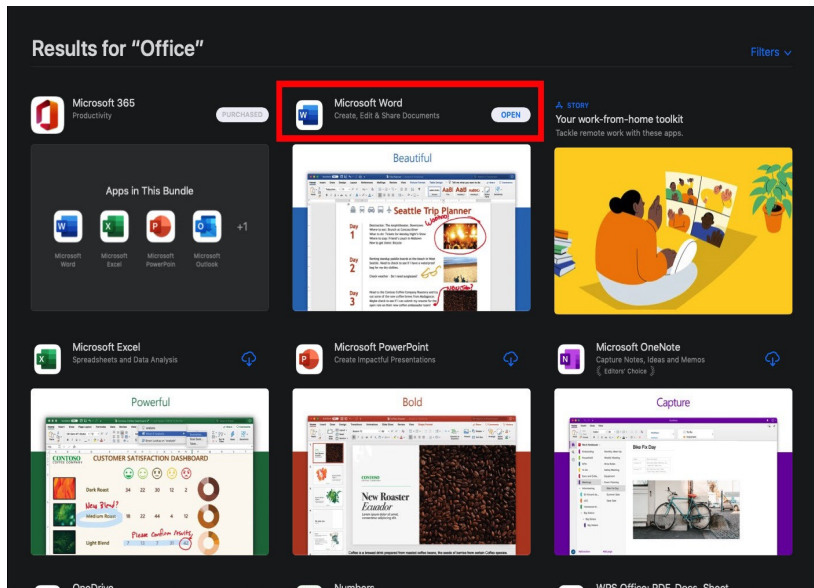
This is the preferred method for installing Office 365 when using the school's network as it reduces bandwidth utilization.

You will require to have an Apple ID in order to download Office applications from the Mac App Store. Information about creating an Apple ID can be found [here](#). If do not have an Apple ID and do not wish to create one, please follow **Method 2**.

1. Open the Mac App Store and search for Office 365. Click on the product you wish to download.

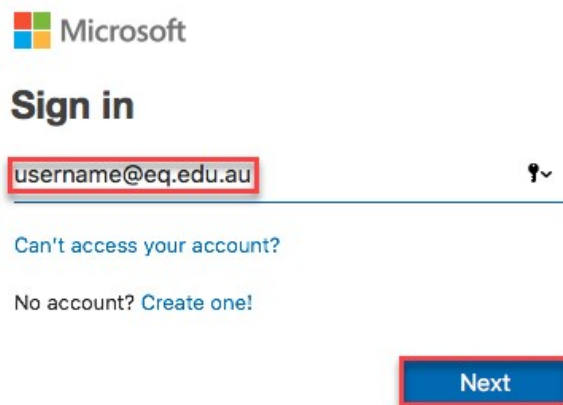


2. Once it has finished downloading, click on Open.



3. Click on either Sign in button to Sign into your account.

4. You will be prompted for your EQ username



5. You will be redirected to the department's sign-in page.

- I. Type your username and password.
- II. Tick 'I agree to the conditions of use and privacy statement'.
- III. Click 'Sign in'.

Department of Education and Training

Managed Internet Service

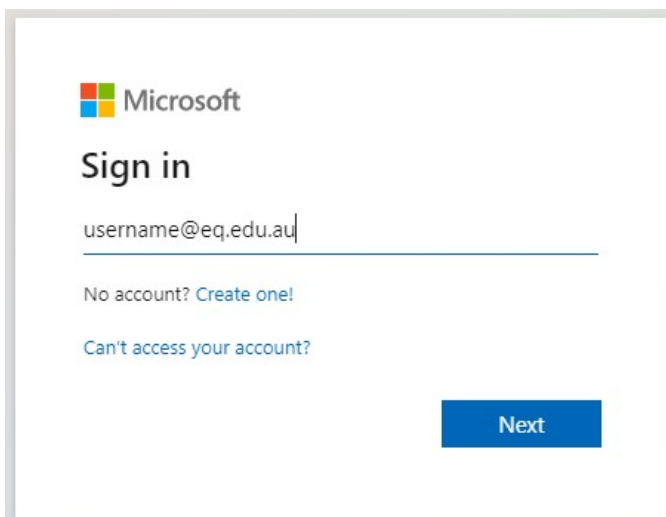
Sign in with your username and password

Username * Password * I agree to the [conditions of use and privacy statement](#)[Change my password](#)

6. Your Microsoft Office 365 software is now ready for you to use.

Method 2 - Download, update to or install Office 365 from the Office Portal

1. Open internet browser and navigate to <http://portal.office.com>
2. You will need to **log into** the Office 365 home page using your EQ details. **Type** your @eq.edu.au email address.
3. **Click Next.**



Microsoft

Sign in

username@eq.edu.au

No account? [Create one!](#)

[Can't access your account?](#)

Next

4. You may be prompted for your EQ username and password on the online authentication popup. **Type** your username and password.

Sign in

https://fed.education.qld.gov.au

Username

Password

5. On the “Managed Internet Service page, **enter** your username and password. **Click** if you agree to abide by the relevant Conditions of use and privacy statement, and then **Click** Sign in.

Queensland Government Department of Education

Managed Internet Service

Sign in with your username and password

Username *

Password *

I agree to the [conditions of use and privacy statement](#)

[Change my password](#)

6. Click on ‘Install Office’, then click on “Office 365 apps”.

Safari File Edit View History Bookmarks Window Help

office.com

Microsoft Office Home My account Mail - STMMISAD, Propter (pstrmm0) - Outlook

Queensland Government Office 365

Good afternoon, Propter

All My recent Shared Favorites

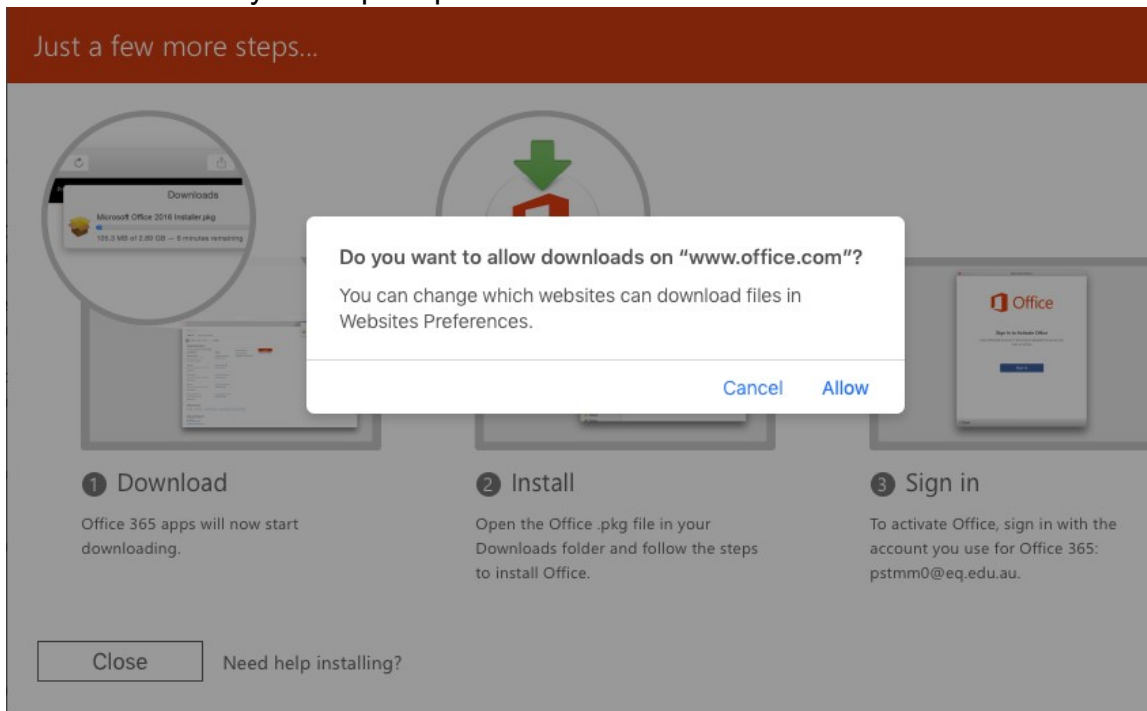
TEST CLASS TEAM Notebook SiteAssets Mar 18

Install Office 1.

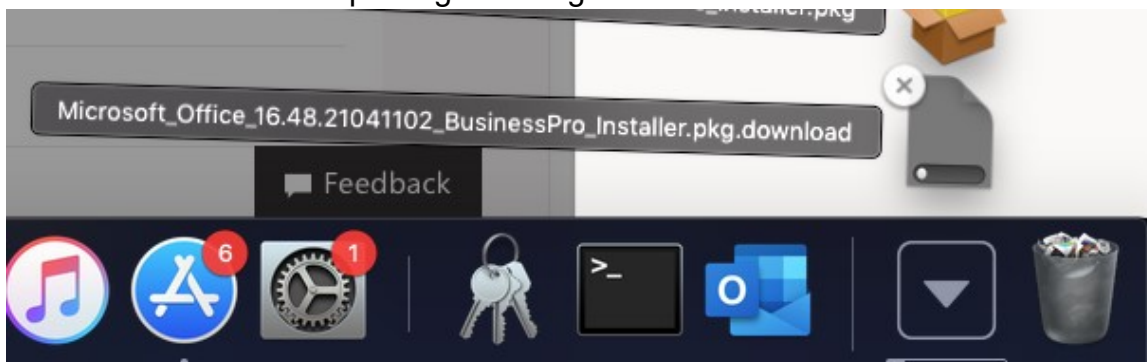
Office 365 apps Includes Outlook, OneDrive for Business, Word, Excel, PowerPoint, and more. 2.

Other install options Select a different language or install other apps available with your subscription.

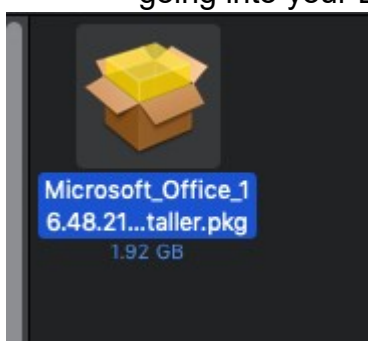
You may see a prompt to allow downloads. Click Allow:

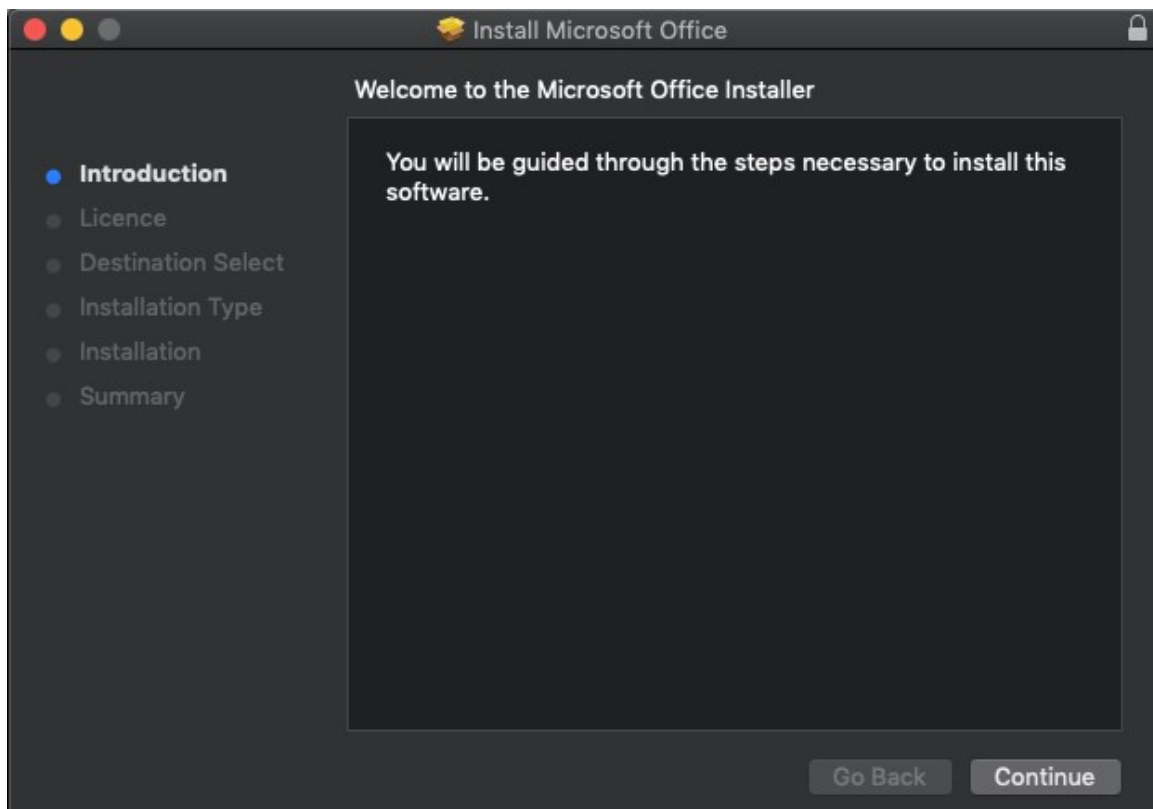


The download package will begin to download.

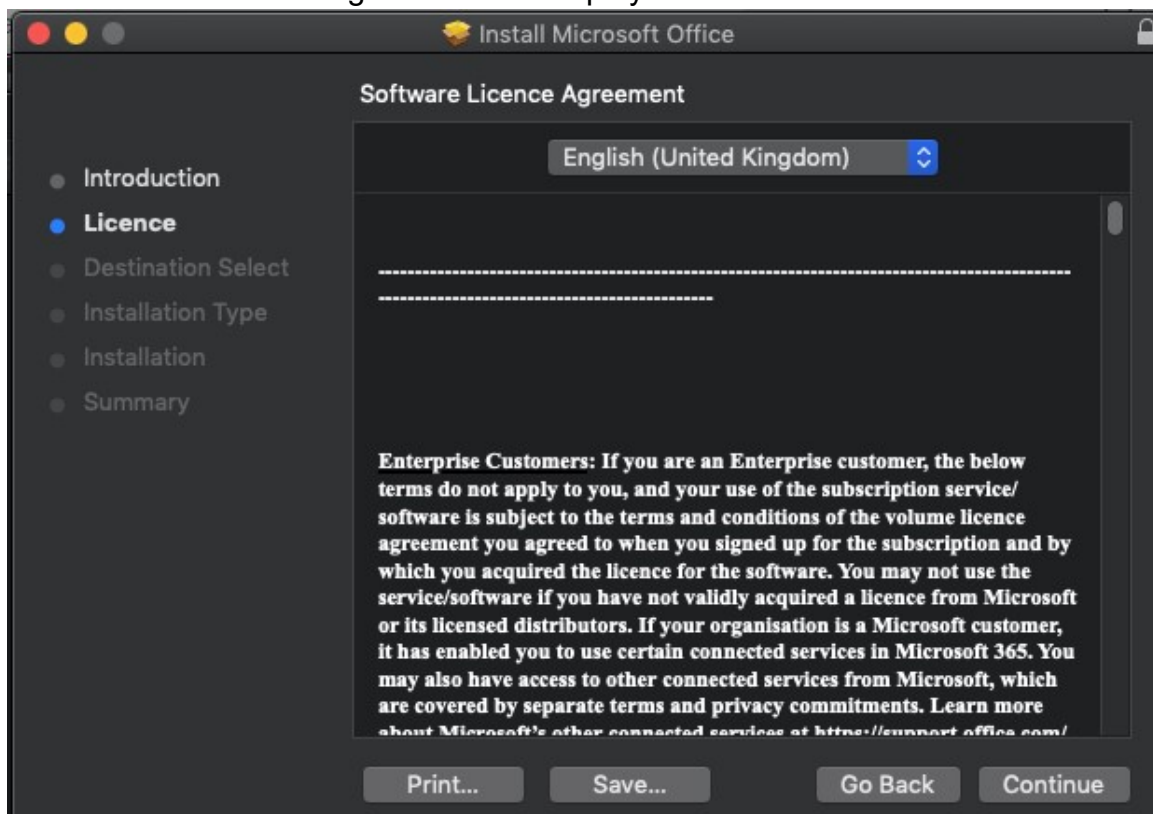


- When the downloading finishes, the file will be listed with the name shown in the previous window. **Double click** the installer file. You can also access this by going into your Downloads folder.

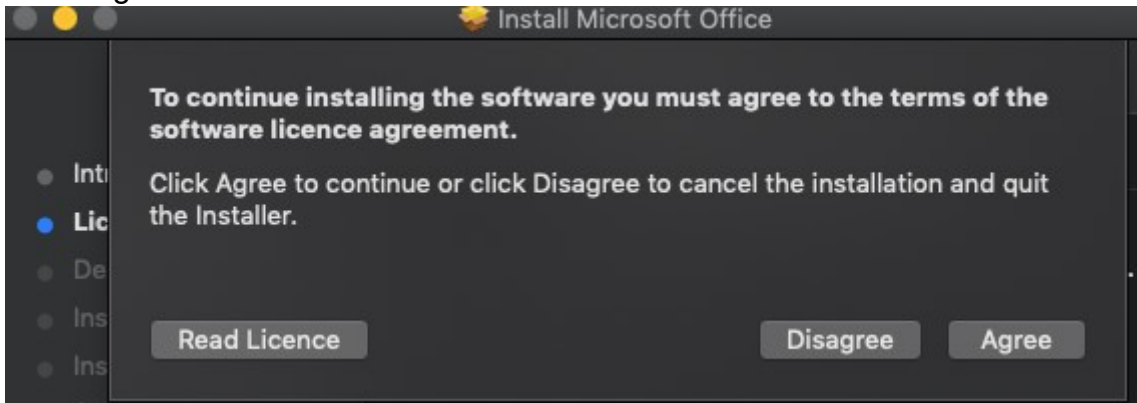




8. The Software Licence Agreement will display. **Read** and **click** Continue.

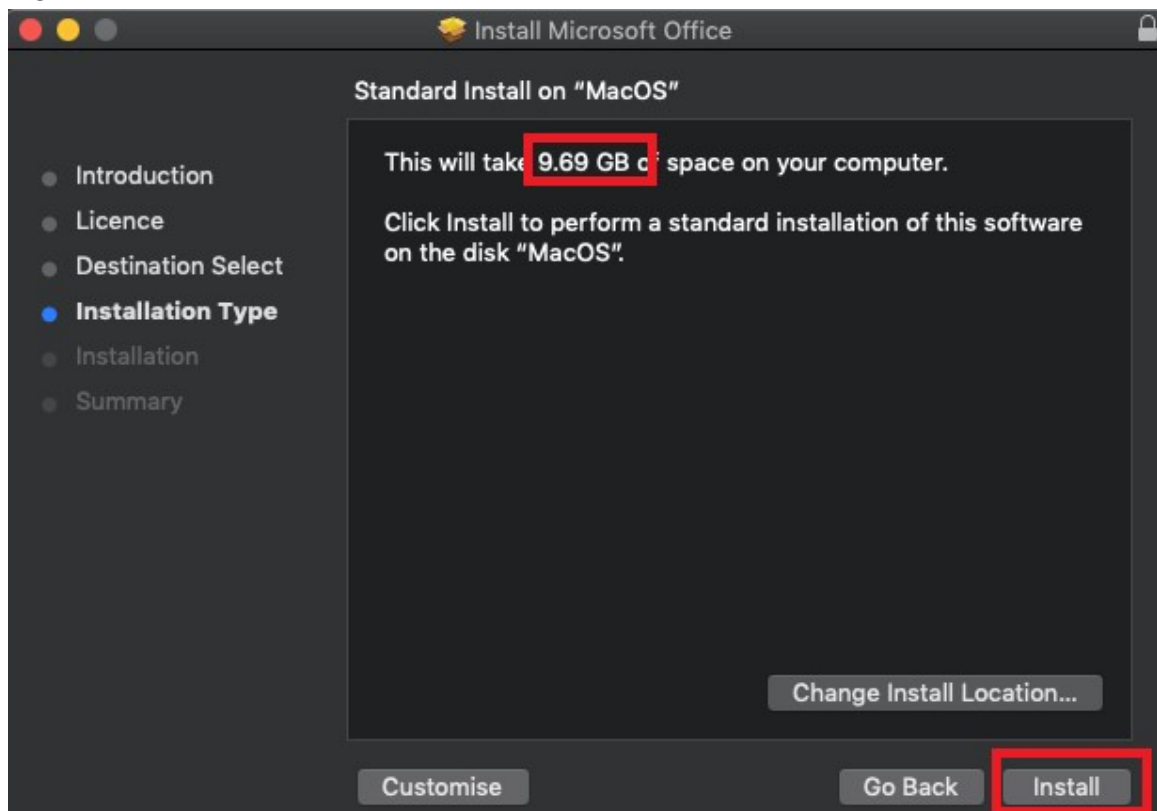


9. You will be prompted to Agree or Disagree to the installation and the licence. **Click Agree.**

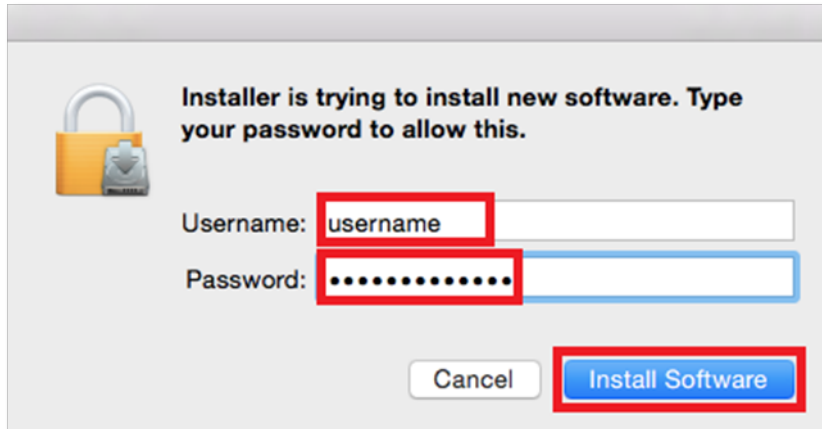


Note: The installation will take over 9GB of your space on your computer.

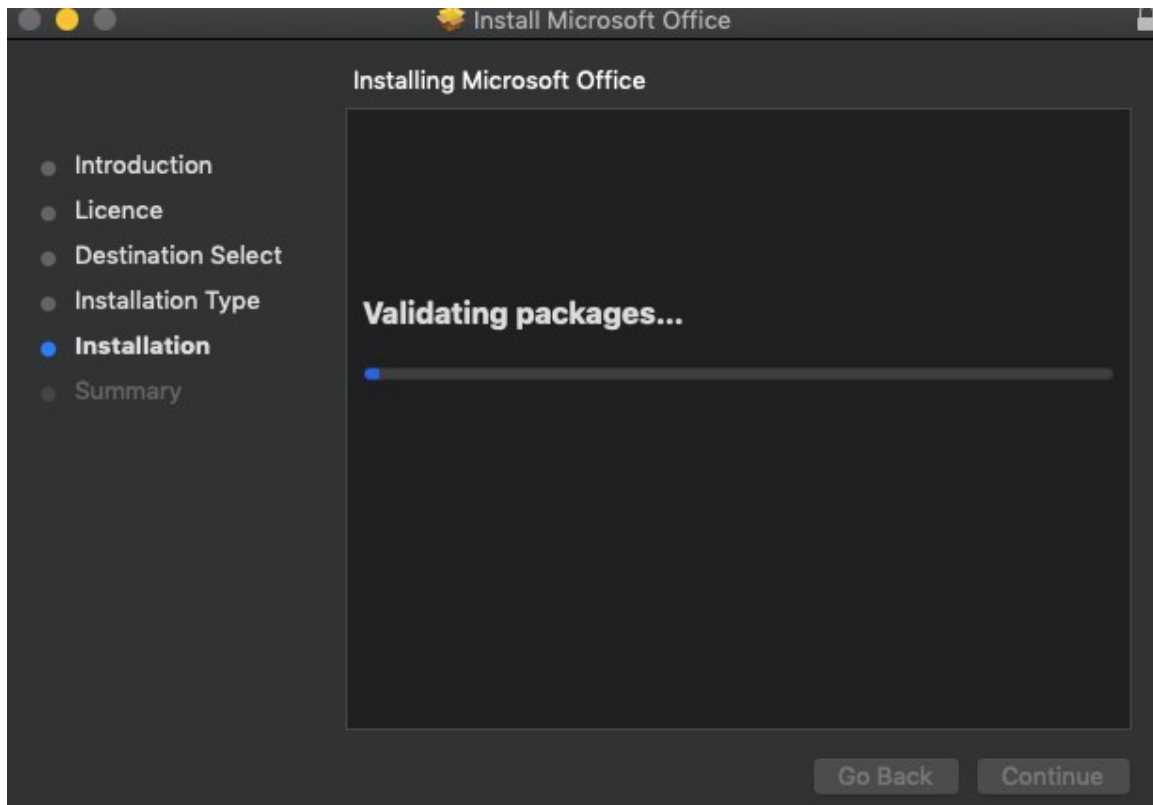
10. **Click Install.**



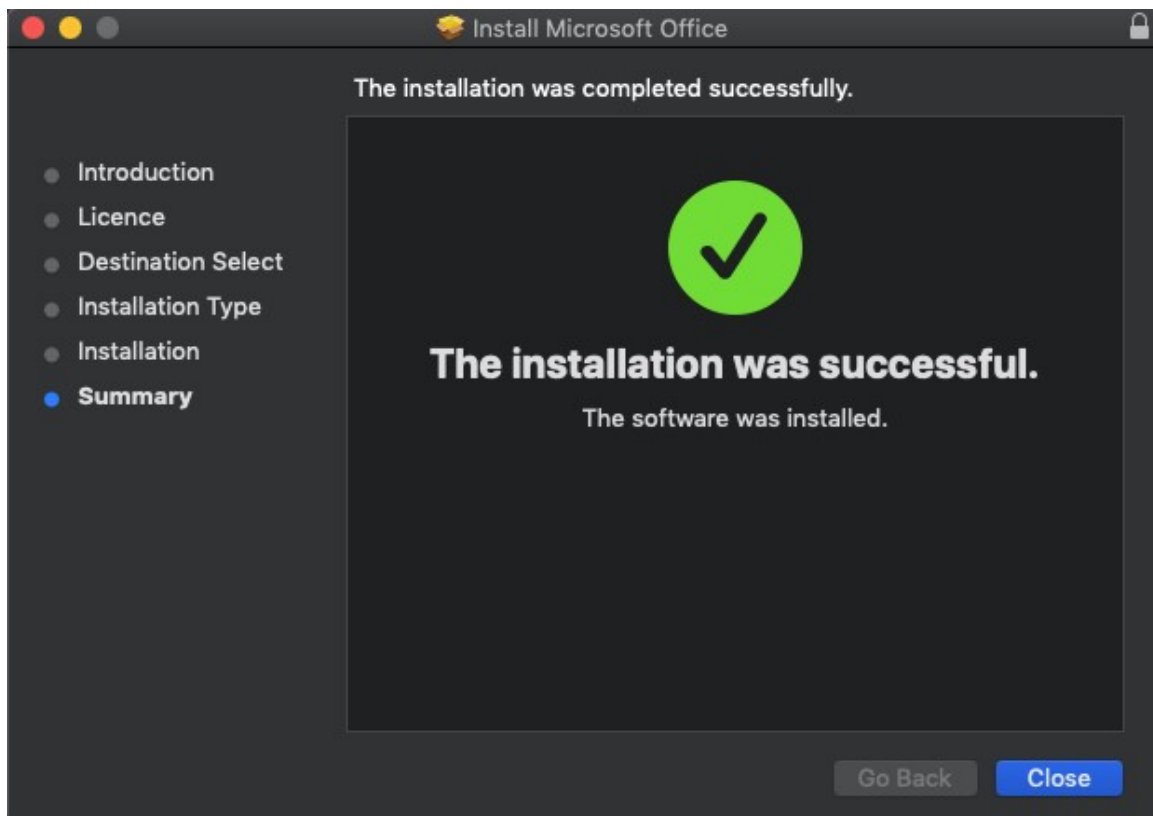
11. You will be prompted by the Installer software on your computer. **Enter** your username and password and **click** Install Software.



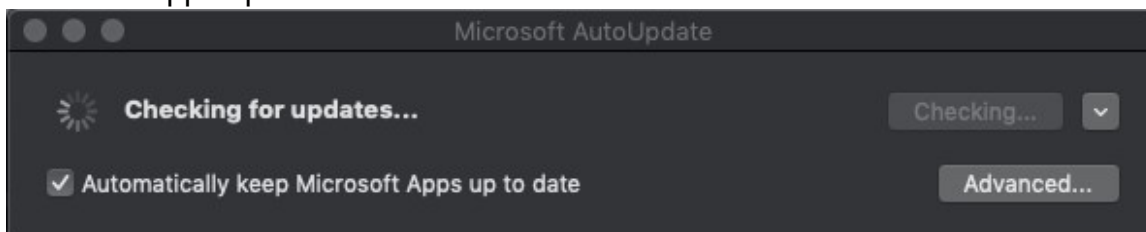
12. The installation of Office 2016 will commence. Wait for the installation to finish.



13. A message will appear to say that your software has been successfully installed. **Click** Close.



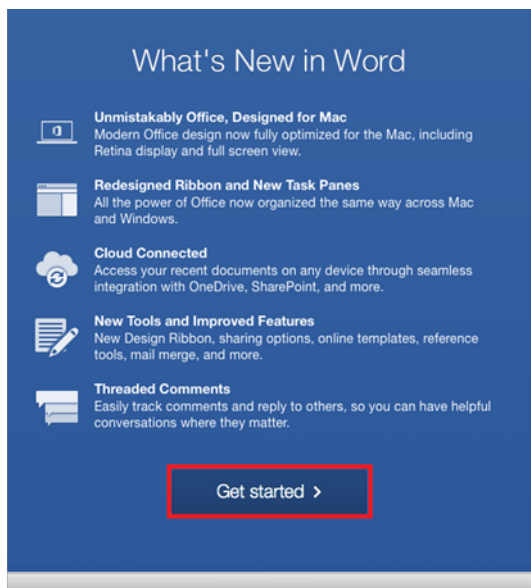
The software installation will close. It may immediately check for updates as below. Please allow it time to complete, and ensure that the option “Automatically keep Microsoft Apps up to date” is selected if desired.



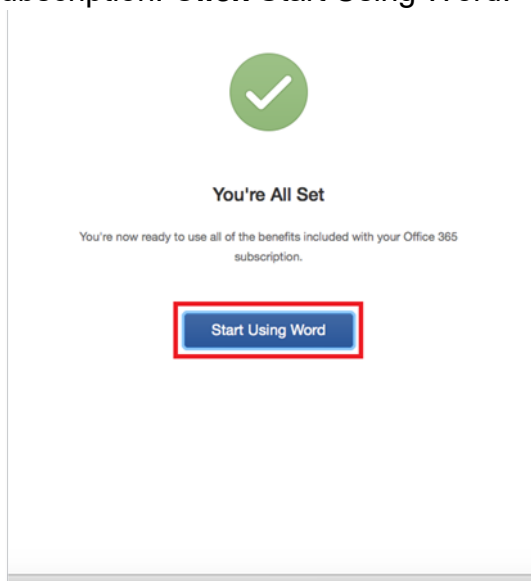
14. To access your newly installed applications, go to your Applications folder (*Command + Shift + A*).

Microsoft Excel	Today at 1:53 pm	1.92 GB
Microsoft OneNote	Today at 1:53 pm	1.04 GB
Microsoft Outlook	Today at 1:53 pm	2.03 GB
Microsoft PowerPoint	Today at 1:53 pm	1.66 GB
Microsoft Teams	Today at 1:53 pm	254.8 MB
Microsoft Word	Today at 1:53 pm	2.19 GB

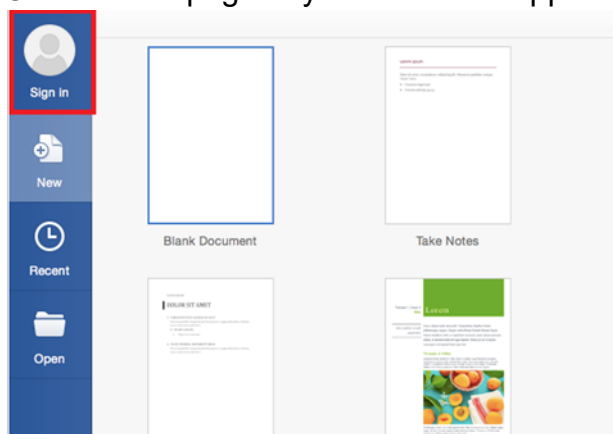
15. **Double click** on the application you want to use. For example, you want to open Microsoft Word. You will be prompted with a window to show what is new in Word. **Click** on Get started.



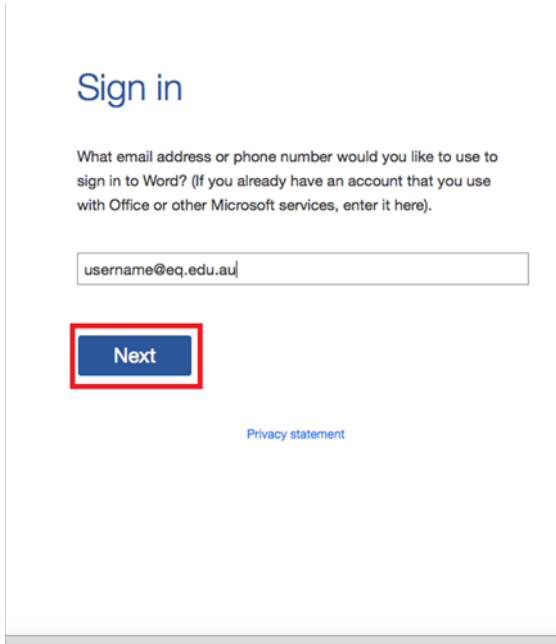
16. You are now ready to use all the benefits included with your Office 365 subscription. **Click** Start Using Word.



17. On the main page of your Microsoft application, **click** 'Sign in'.



18. You will be prompted to enter your email address (username@eq.edu.au). Press Next.



19. You will need to log in to the online authentication page again. Enter your username and password and click Log in.



After successfully logging in, you will be taken back to the application.

Your Microsoft Office software is now ready for you to use. This software is only for personal devices and will remain available as long as you are a Queensland state school student, or employed by the department.

For staff, contact the Service Centre by logging a job or calling 1800 680 445 if you have any issues with downloading or installing Office. For students, contact your school technician or Managed Internet Service (MIS) administrator.